

APPENDIX P
PUBLIC OUTREACH

Communications and Engagement Plan

Tracy Subbasin

**Communication and Engagement
Plan for the Groundwater
Sustainability Plan**

June 2019

1.0 INTRODUCTION

1.1 SGMA OVERVIEW

The Sustainable Groundwater Management Act (SGMA) is a combination of three bills signed by California Governor Jerry Brown in 2014: Assembly Bill (AB) 1739, Senate Bill (SB) 1168, and SB 1319. SGMA provides local agencies with the framework to manage groundwater basins in a sustainable manner. The legislation recognizes that groundwater is most effectively managed at the local level, and local agencies will need to achieve groundwater sustainability by 2040.

In SGMA, sustainable groundwater management is defined as management of groundwater supplies in a manner that can be maintained in planning and implementation phases without causing undesirable results. Undesirable results include significant and unreasonable chronic lowering of groundwater levels, reduction of groundwater storage, seawater intrusion, degraded water quality, land subsidence, and interconnected surface waters.

1.2 DESCRIPTION OF TRACY SUBBASIN

The Tracy Subbasin (DWR Bulletin 118, 5-22.15) is a medium-priority subbasin within the larger San Joaquin Valley Groundwater Basin. Several agencies submitted Basin Boundary Modification requests in 2018 to the California Department of Water Resources (DWR) to modify the boundaries of the Eastern San Joaquin (ESJ) Subbasin, the Tracy Subbasin (Subbasin) and the Delta-Mendota Subbasin in order to better facilitate jurisdictional issues. DWR approved the modifications in February 2019. The new basin boundaries are shown on **Exhibit 1**.

The Subbasin covers portions of two counties: San Joaquin and Alameda. The northern boundary (from west to east) of the Subbasin follows the San Joaquin River west until its convergence with the Mokelumne River by Webb Tract. The eastern boundary (from north to south) follows the San Joaquin River south until the San Joaquin-Stanislaus County line other than for a small area which extends east along the City of Lathrop service area. The southeastern boundary (from east to west) is irregular with some portions following the San Joaquin-Stanislaus County line before jogging north again along the foothills to the Alameda and Contra Costa County line. The western boundary (from south to north) the Alameda and Contra Costa County line and then along the San Joaquin and Contra Costa County line. Adjacent subbasins include the Eastern San Joaquin Subbasin on the east, the Delta-Mendota Subbasin to the south, and the East Contra Costa Subbasin on the west; all of which are also part of the larger San Joaquin Valley Groundwater Basin; as well as the Solano Subbasin of the Sacramento Groundwater Basin to the north.

The Subbasin is drained by the San Joaquin River and one of its major westside tributaries; Corral Hollow Creek. The San Joaquin River flows northward into the Sacramento and San Joaquin Delta and discharges into the San Francisco Bay.

1.3 DESCRIPTION OF THE TRACY SUBBASIN GSAs

Sustainable management of the Tracy Subbasin will be performed cooperatively by seven Groundwater Sustainability Agencies (GSAs) in the Tracy Subbasin: Banta-Carbona Irrigation District, Byron-Bethany Irrigation District, City of Lathrop, City of Tracy, San Joaquin County, Stewart Tract, and West Side Irrigation District (hereafter known as GSA agencies). San Joaquin County was elected by the agencies

to be the lead agency during the development of a single Groundwater Sustainability Plan (GSP) for the Tracy Subbasin.

San Joaquin County was authorized by the Subbasin GSAs to submit the GSP Initial Notification to DWR. The Initial Notification was filed for the entire Tracy Subbasin prior to the basin boundary modification and was amended in July 2019.

1.4 DECISION-MAKING PROCESS

Representatives from San Joaquin County or individual GSAs have no authority of their own. All actions agreed upon by the GSA representatives must be voted on by each member agency at a public meeting (e.g. County Board of Supervisors, City Councils, and/or water agency Board of Directors meetings). Stakeholders and interested parties will be notified prior to public meetings involving decisions regarding the GSA or GSP. Throughout development and implementation of the GSP, the seven GSAs will solicit feedback from stakeholders and interested parties, particularly at key decision points. Any proposed implementation measures for the GSP must then be voted on by each GSA's member agencies at a public meeting.

1.5 COMMUNICATION AND ENGAGEMENT PLAN

As required by SGMA, each GSA must consider the interests of all beneficial uses and users of groundwater and include them in the GSP development process. This Communication and Engagement Plan (Plan) is intended to provide a high-level overview of how stakeholders within the coverage area will be engaged through outreach, education, and opportunities for input during the development and implementation of the GSP.

2.0 GOALS AND DESIRED OUTCOMES

2.1 GOALS OF GSP DEVELOPMENT

The goals of the GSA agencies are to establish and execute a GSP that will sustain and manage groundwater within the Subbasin in a way that is cost-effective, avoids undesirable results, and is beneficial, with minimal negative impacts, to the beneficial uses and users.

2.2 COMMUNICATION OBJECTIVES

The objectives of this Plan are to provide stakeholders and interested parties clear, consistent, and unified information and opportunities to engage and provide input throughout the GSP process.

2.3 COMMUNICATION AND PUBLIC PARTICIPATION GOALS

The specific communication and public participation goals are to:

- Provide the public with comprehensive, clear, balanced, and objective information to assist in understanding the GSP effort and associated alternatives, opportunities, and/or solutions.
- Utilize effective communication methods and tools.
- Provide information in sufficient frequency so that stakeholders feel adequately engaged and informed of material in a timely manner.
- Solicit public feedback throughout development and implementation of the GSP, particularly at key decision points.
- Ensure public concerns and interests are understood and considered.

- Provide methods for the public to be involved in the GSP development and implementation stages.
- Document and provide access to information, presentations, and comments received to provide clarity regarding the decision-making process.

2.4 OVERRIDING CONCERNS AND CHALLENGES

Through preliminary discussions and stakeholder engagement efforts, one major concern identified is the potential impact to the agricultural industry in the Subbasin. Most of the groundwater usage within the Subbasin is by agriculture.

3.0 STAKEHOLDER IDENTIFICATION

3.1 PRIMARY STAKEHOLDERS

Primary stakeholder groups are the GSA members: the local land use and water authorities that will be making decisions about groundwater management and whose participation is mandatory for the GSP process to occur. Those entities include Banta-Carbona Irrigation District, Byron-Bethany Irrigation District, City of Lathrop, City of Tracy, San Joaquin County, Stewart Tract, and West Side Irrigation District.

3.2 SECONDARY STAKEHOLDERS

The GSA member entities have the responsibility, as identified in SGMA, Section 10723.2, for the “Consideration of All Beneficial Uses and Users of Groundwater”. These users include organizations, agencies, or individuals that have an interest in groundwater; such as the agriculture community, well owners, military, tribes, state and federal agencies, and environmental groups and agencies. Although the law clearly states that these interests are to be considered, the extent of engagement with the stakeholders is left to the GSAs to determine. San Joaquin County will maintain and periodically review the list of secondary stakeholders specific to its management area to ensure that other interested persons or groups are identified and added to the list as needed. Each GSA in the Subbasin will also maintain a list specific to its stakeholders and regularly share the list with the other GSAs.

3.3 INTERESTED PERSONS LIST

Establishment and ongoing maintenance of an interested party list is required by SGMA during GSA formation and GSP development and implementation. Chaptered in Water Code §10723.4, this section states that any person may request, in writing, to be placed on a list to receive notices regarding plan preparation, meeting announcements, and availability of draft plans, maps, and other relevant documents. To comply with this section, the San Joaquin County GSA has established and maintains an email notification database. The public is regularly informed through engagement activities how they can request to be placed on the list (e.g. through the Tracy Subbasin website, emails, and at public meetings, etc.). In addition, a Tracy Subbasin website will be developed that will also provide a means for the public to request and receive notifications related to GSP development.

3.3 ON-GOING

As an ongoing practice, the GSAs will routinely assess stakeholder involvement and update public participation practices to meet the needs of those interested in the Subbasin and its development of the GSP.

4.0 VENUES FOR ENGAGING

To effectively inform, educate, and engage audiences regarding milestones, meeting dates and times, and other pertinent information about the development of the GSP, the GSAs will conduct the following activities to notify the public of engagement opportunities.

4.1 NOTIFICATIONS

The GSAs will use a multi-layered approach to effectively inform interested parties of upcoming opportunities to engage in the GSP including:

- **Email blast** using an established interested party email list. Maintain a list of interested stakeholder email database updated frequently based on interest and sign-ups on the Subbasin websites, at board meetings, and other venues.
- **Website postings** with agendas, meeting minutes, and presentations.

4.2 ENGAGEMENT METHODS

The GSAs will use a variety of methods and venues to engage stakeholders throughout GSP development. The public will be given an opportunity to provide comments on draft versions of the GSP.

- **Website:** Use tracysubbasin.org as an information hub associated with development of the basin-wide GSP. The Subbasin website will be updated and managed by San Joaquin County on behalf of the GSAs. The website will provide meeting agendas and minutes, presentations, white papers, FAQs, and GSA contact information. Draft GSP chapters will also be posted on the Subbasin website and comments will be collected via an online form. Those interested can also sign up directly to receive updates by email. Additionally, the website will be used as a clearing house to document comments received, responses, and decision-making.
- **Public board meetings:** Conduct public GSA meetings, as needed, to encourage input on items associated with the development of the GSP and to garner general feedback for consideration. Each meeting will include a set agenda with opportunities to comment on agenda items as well as a public comment period for items not on the agenda. **Attachment A** contains a list of these meetings.
- **Board, neighborhood, or other community meetings:** Attend partner agency meetings (council meetings, commission meetings, neighborhood/community meetings/ag commission) to give updates on the progression of the GSP. Meetings with primary stakeholders will be held periodically, and during key decision points, at the agencies' regularly scheduled meeting times. Members of the public and partners from other local agencies are encouraged to attend these meetings to voice their thoughts and concerns throughout the GSP development, public review, and implementation phases. Meeting notices and agendas are routinely distributed to the Interested Parties List and are posted on the GSA website.

4.3 PRESENTATION MATERIALS

To the extent possible the GSAs will use common presentations and FAQ sheets at their various meetings. Some of the key messaging points are provided in **Attachment B**.

5.0 IMPLEMENTATION TIMELINE

SGMA statute and regulations define key phases in which stakeholder engagement is required. The timelines for implementing this Plan are broken down by phase; however, this timeline is tentative and subject to change with the progression of GSP development, public review, and implementation phases.

5.1 PHASE 1: GSA FORMATION AND COORDINATION – 2015 THROUGH 2018

Prior to filing of the Initial Notification to become a GSA, all of the GSAs held public meetings to discuss their intent to become GSAs. A list of stakeholders was developed during this period. In conjunction with what is now the East Contra Costa Subbasin, facilitation services were obtained through DWR to perform public outreach and develop a Communications Plan for both the Tracy and East Contra Costa Subbasin. In addition to these outreach activities, during the Basin Boundary Modification process San Joaquin County also reached out to stakeholders to gain their approval. This stakeholder list is being reused to begin Phase 2.

5.2 PHASE 2: GSP PREPARATION AND SUBMISSION – 2019 THROUGH 2022

This document outlines Phase 2 activities. SGMA requires and/or encourages stakeholder input during specific activities in this phase (listed below).

- GSP Initial Notification: San Joaquin County filed the required Initial Notification to DWR in July 2019. The GSAs will inform the public via:
 - Public Meetings: The GSA will use their Board meeting to updates member agencies, informing them of the key information from the Initial Notification such as the process for developing the GSP and how interested parties can be involved.
 - Notifications: The public will receive a notification containing the same information via the Notification methods described above.
- GSP Preparation: The GSAs will encourage active involvement through the methods described above, and beneficial uses and users will be considered as the GSP is developed and public input will be considered.
- GSP Public Notice and Adoption: SGMA Section 10728.4 requires 90-day public notice prior to adoption of a GSP. Noticing will occur using the paper of record that comprises each GSA service area.
- GSP Submittal: SGMA regulations Section 354.10 requires a summary of communications including description of beneficial users, list of public meetings, and comments/responses received will be provided as part of the GSP submittal. The website will maintain an administrative record of all communication actions and will use that for submission purposes.

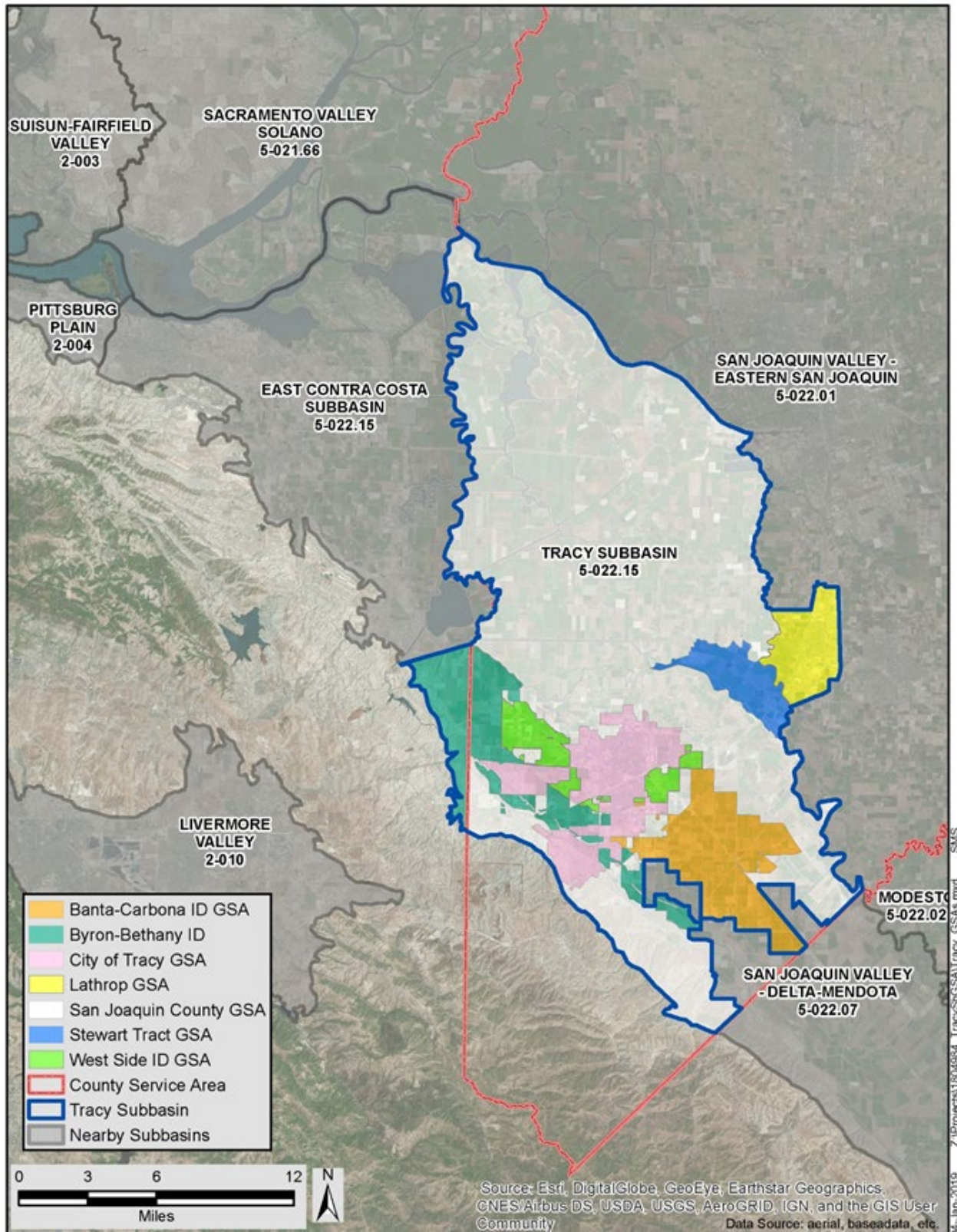
5.3 FUTURE PHASES

As mentioned, this Plan identifies the communication and engagement efforts planned for Phase 2 of GSP Preparation and Submission (2019-2022). This Plan may be updated and used during future GSP phases including the GSP Implementation, during the annual reports and the 5-year update and revisions to the original GSP.

###

EXHIBITS AND ATTACHMENTS

EXHIBIT 1



ATTACHMENT A – Public Meetings and Briefings

Byron-Bethany Irrigation District

Board of Directors Board meetings (third Tuesday of each month)

Banta-Carbona Irrigation District

Board of Directors Board meetings (first Wednesday after the 10th of each month)

City of Lathrop

Council meetings (second Monday of each month)

City of Tracy

Council meetings and workshops (first and third Tuesdays of each month)

San Joaquin County

Board of Supervisor meetings (second and fourth Tuesday of each month)

Stewart Tract

RD 2000 Board of Directors Board meetings (no regular meetings)

SGMA MANDATED AGENCIES AND GROUPS BRIEFINGS

Tribal: Wilton Rancheria Tribe, Bay Miwok Tribe

Federal: U.S. Army (Tracy Army Depot), U.S. Bureau of Reclamation, US Fish and Wildlife

State: Department of Water Resources, Duell Vocational Institute

Local: Community Water Systems, Reclamation Districts, Domestic Well Owners, Disadvantaged Communities served by wells, Environmental Users of Groundwater

Potential Other Venues:

Farm Bureau

Chamber of Commerce

Trade Groups

ATTACHMENT B – Key Messages

What is SGMA

The Sustainable Groundwater Management Act, signed into law in 2014, provides a framework for long-term sustainable groundwater management across California. It requires that local and regional authorities in the medium- and high-priority groundwater basins form a locally-controlled and governed Groundwater Sustainability Agency (GSA) and prepare and implement a Groundwater Sustainability Plan (GSP).

What is a GSP

A GSP is a plan required by SGMA and developed by a GSA that outlines how the GSA will implement, manage and measure specific actions for the health and viability of the subbasin. Specifically, groundwater must be managed with the goal to reduce or avoid “undesirable results” including, but not limited to, lowering of groundwater levels, water quality degradation, and depletion of surface water. The GSP for the Subbasin must be submitted by January 31, 2022.

De minimis Users

Domestic well users generally fall within the SGMA definition of a de minimis extractor. SGMA defines a de minimis extractor as “a person who extracts, for domestic purposes, two acre-feet or less (of groundwater) per year.” Most private users of domestic wells use less than two acre-feet of water per year.

Local Control

SGMA provides for the management of groundwater supplies by local authorities. In fact, it specifically limits state intervention provided that local agencies develop and implement GSPs as required by the legislation. Only under a limited set of circumstances, can the State Water Board step in to help protect local groundwater resources if local efforts to form a GSA or prepare a viable GSP are not successful.

Stakeholder Participation

Under the requirements of SGMA, GSAs must “consider interests of all beneficial uses and users of groundwater”. GSP regulations require that during GSP preparation, GSAs must provide opportunities for the public to be engaged and actively involved throughout the process and document in the GSP how they accomplished that. Stakeholders can be involved by visiting the Tracy Subbasin website, subscribing to receive notifications, providing comments, and attending public workshops.

Overall health of the basin

Data collected over many years indicates the Tracy groundwater subbasin is generally in good condition. The GSP development will include several SGMA required technical groundwater studies and models. The results of these studies will be shared at public workshops and meetings and the public will be able to review and provide comments.

Support for Agriculture

The large majority of groundwater usage comes from agriculture. The GSAs have and will continue to engage the agricultural community throughout the GSP process and is committed to ensuring continued existence of a robust agricultural community.

**Tracy Subbasin
Workshop #1 Summary**

Date: Tuesday, July 21, 2020

Time: 5:30 p.m. – 7:00 p.m.

Location: Virtual (Webinar)

Attendees	
Name	Agency
Ryan Alameda	Stewart Tract*
Debbie Cannon	Luhdorff & Scalmanini Consulting Engineers
Alicia Connelly	San Joaquin County*
Pete Dennehy	N/A
Ryan Dupuis	N/A
Mary Elizabeth	N/A
Greg Gibson	City of Lathrop*
Nick Janes	Byron-Bethany Irrigation District* & West Side Irrigation District*
Rosemary Martinez	City of Lathrop*
Bruce McLaughlin	N/A
Glenn Prasad	San Joaquin County*
Daryll Quaresma	N/A
Michael Quartaroli	N/A
Keith Robertson	N/A
Lemar Saffi	City of Tracy*
Catherine Smith	N/A
Chelsea Spier	California Department of Water Resources
Roy Valadez	San Joaquin County*
David Weisenberger	Banta-Carbona Irrigation District*
Matt Zidar	San Joaquin County*
Staff and Presenters	
Name	Agency
Michael Callahan	San Joaquin County*
Khandriale Clark	Stantec
Kirsten Pringle	Stantec
Richard Shatz	GEI

*indicates that the agency is one of the Tracy Subbasin Groundwater Sustainability Agencies

Purpose

The Tracy Subbasin Groundwater Sustainability Agencies (Tracy Subbasin GSAs) held a coordinated, virtual public workshop from 5:30 p.m. to 7:00 p.m. on Tuesday, July 21, 2020. This was the first in a series of public workshops aimed at educating and soliciting input from members of the public about key topics related to the development of the Groundwater Sustainability Plan (GSP) for the Tracy Subbasin. The purpose of the workshop was to inform stakeholders and other interested parties within the Tracy Subbasin about SGMA and the GSP development process and identify opportunities for public input in this process.

Summary

The workshop was held virtually through GoToWebinar, an online meeting platform. A total of 29 individuals registered for the workshop and 20 individuals attended. Attendees were notified that the workshop was being recorded for preparation of this summary and to post a video of the workshop for follow-on viewing by attendees, the public, and other interested parties.

The Tracy Subbasin GSAs advertised the workshop via postings on the Tracy Subbasin and GSAs' websites; emails to the Tracy Subbasin Interested Parties Database; and direct invitations to individual stakeholders and stakeholder organizations, including the San Joaquin Farm Bureau Federation, Mountain House Community Services District, and Stockton East Water District. The workshop flyer was made available in both English and Spanish.

The workshop included a series of short presentations from GSA representatives and consultant staff. Speakers included Michael Callahan, San Joaquin County; Richard Shatz, GEI; and Kirsten Pringle, Stantec. Workshop topics included: SGMA, the Tracy Subbasin, the GSP development process, content of the draft GSP chapters 1 - 3, and methods for interested parties to stay informed and engaged in development of the draft GSP.

The presenters held three designated question and answer segments. The attendees submitted questions using the webinar platform or by text message to Ms. Pringle. The attendees were given the option of having their microphone unmuted and reading their question out loud themselves; however, no attendee chose to do so.

A link to the recording of the workshop and copies of the workshop materials in English and Spanish are available on the Tracy Subbasin website.

Audience Feedback

Catherine Smith, workshop participant, asked the following questions:

- It appears on the map that the homes along W Grant Line Road are no longer in the Byron-Bethany Irrigation District. Is that correct? If they are no longer in Byron-Bethany Irrigation District, what does that mean?
- Are you planning to place meters on private residential wells? If so, what is the timeline?

Tracy Subbasin Workshop #2 Summary

Date: Thursday, January 21, 2021

Time: 5:30 p.m. – 6:30 p.m.

Location: Virtual (Zoom)

Attendees	
Name	Agency
Sarah Bai	N/A (Participant)
John Brodie	San Luis & Delta-Mendota Water Authority
Stephen Chen	N/A (Participant)
Jose Coronado	N/A (Participant)
Greg Gibson	City of Lathrop*
Claire Howard	San Luis & Delta-Mendota Water Authority
Lemar Saffi	City of Tracy*
Sean Storey	GEI
Greg Young	Byron-Bethany Irrigation District* and Westside Irrigation District*
Staff and Presenters	
Name	Agency
Stephen Pang	Stantec
Kirsten Pringle	Stantec
Richard Shatz	GEI
Matt Zidar	San Joaquin County*

*indicates that the agency is one of the Tracy Subbasin Groundwater Sustainability Agencies

Purpose

The Tracy Subbasin Groundwater Sustainability Agencies (GSAs) held a coordinated, virtual public workshop from 5:30 p.m. to 6:30 p.m. on Thursday, January 21, 2021. This was the second in a series of public workshops aimed at educating and soliciting input from members of the public about key topics related to the development of the Groundwater Sustainability Plan (GSP) for the Tracy Subbasin. The purpose of the workshop was to receive input from stakeholders and other interested parties within the Tracy Subbasin about the draft Sustainable Management Criteria (SMC).

Summary

The workshop was held virtually through Zoom, a video conferencing and online meeting platform. A total of 13 individuals attended, including technical staff and GSA representatives.

The Tracy Subbasin GSAs advertised the workshop via postings on the Tracy Subbasin and GSAs' websites and social media accounts and emails to the Tracy Subbasin Interested Parties Database. The workshop flyer is included as **Attachment A** to this summary. Direct invitations

were also sent via email to stakeholder and local community organizations, including the Mountain House Community Services District, San Joaquin Farm Bureau Federation, San Joaquin River Club, Sikhs of Tracy, and Reclamation Districts with jurisdiction within the basin boundaries. In addition, the GSAs notified representatives of adjacent basins.

Prior to the workshop, participants were encouraged to view a short, informative presentation on SMC created by the GSAs. The purpose of the video was to explain key concepts related to SMC (e.g., sustainability goal, minimum thresholds, measurable objectives) in order to prepare interested parties for participation in the workshop and monthly GSP Coordination and Technical Committee Meetings.

The workshop started with opening remarks from Matt Zidar, County of San Joaquin GSA representative, followed by an informational presentation on SMC provided by Richard Shatz, GEI (technical consultant for the subbasin). The workshop participants then discussed and provided input on the draft SMC for the Tracy Subbasin. The discussion was guided by a Participant Guide which asked questions related to the draft SMC and GSP. The guide was also used to collect information about the participants, including their role as it relates to groundwater, familiarity with SGMA, and whether they own or operate a well. A copy of the Participant Guide is provided as **Attachment B** to this summary.

Using the Participant Guide, the workshop facilitator led a guided discussion on the draft SMC. Discussion topics included groundwater levels, groundwater quality, subsidence, and groundwater dependent ecosystems. Participant feedback was recorded in the meeting notes and is summarized below. Participants and GSA representatives were also provided the option to send their Participant Guide to the facilitator up to a week after the workshop. Feedback provided at the workshop was summarized at the Tracy Subbasin GSP Coordination meeting held on February 18, 2021 and used to inform the content of the draft GSP.

Participant Feedback

Sarah Bai, local resident, provided the following comments:

- Consider concerns about potential rate increases resulting from GSP implementation.
- Apply criteria for groundwater quality impacts to livestock production in addition to crop production.
- Examine how climate change may impact groundwater pumping costs.
- Consider consequences if groundwater quality becomes harmful to its users.
- Determine how the development of a nature preserve in the city of Tracy might impact groundwater resources.

Greg Gibson, City of Lathrop GSA representative, asked the following questions:

- Clarify why groundwater quality is included in the criteria for groundwater levels.
- Provide a detailed discussion of how soil composition impacts subsidence within the Tracy Subbasin.
- Add peat subsidence as a criterion when examining subsidence in the Delta region of the subbasin.



Help plan for the future of your community's groundwater resources

Local agencies are developing a plan to continue the sustainability of the region's groundwater supplies for the next 20 years. The plan will be used to protect groundwater users in the region. *If you use groundwater for your home, farm, or business this may impact you.*

Lend your voice to this important planning process at our upcoming virtual workshop:

Thursday, January 21, 2021

5:30 PM – 6:30 PM

[Click here to register](#)

Interested in learning more? Watch our informative video series on the [Tracy Subbasin website](#).

For questions, contact Kirsten Pringle at kirsten.pringle@stantec.com or 916-418-8243.



Stewart
Tract



For more information, visit: tracysubbasin.org

Tracy Subbasin Sustainable Management Criteria Participant Guide

BACKGROUND

Local Groundwater Sustainability Agencies are preparing a plan to manage the region's groundwater. As part of this process, these agencies are interested in the input of those that live, work, and use groundwater in the region. You can help us by providing responses to the questions identified in this Participant Guide. Your responses will be combined with those of others and shared to with the Groundwater Sustainability Agencies to help inform and guide the content of the Groundwater Sustainability Plan.

For more information about the Groundwater Sustainability Plan and Tracy Subbasin, visit our website at tracysubbasin.org/.

INSTRUCTIONS

This Participant Guide is intended to support discussions during the January 21, 2021 public workshop on Sustainable Management Criteria for the Tracy Subbasin. You may provide your input verbally during the designated discussion time and/or in this document. Completion and submission of this Participant Guide is encouraged, but not required to participate in the workshop.

This Participant Guide is divided into three parts. **Parts 1 and 2 are optional.** Part 1 asks some basic questions about you. Part 2 asks about how you use groundwater and your familiarity with the Sustainable Groundwater Management Act. You may fill-out these sections anytime during or after the workshop.

Part 3 asks you to provide input on how the Groundwater Sustainability Plan should define 'sustainability' of the region's groundwater resources. **The workshop facilitator will lead you and the other participants through this section.**

When you have completed the Participant Guide, please **email a copy to Kirsten Pringle at kirsten.pringle@stantec.com. Worksheets will be accepted until 5 PM, Friday, January 29.**

Your responses provided in this Participant Guide and verbally during the workshop will be combined with the responses of others and summarized at the February Groundwater Sustainability Plan Coordination Meeting. Note that individual responses will not be shared, but the summary may include a list of participating individuals.

For questions or concerns, contact Kirsten Pringle at kirsten.pringle@stantec.com or (916) 418-8243.

Tracy Subbasin Sustainable Management Criteria Participant Guide

PART 1 (Optional)

1. Name
2. Organization/Affiliation
3. City
4. Email or Contact Information
5. Would you like to be added to our mailing list? You will receive notices about upcoming public events and releases of public documents.
 - Yes
 - No

Tracy Subbasin Sustainable Management Criteria Participant Guide

PART 2 (Optional)

1. How would you characterize your role as it relates to groundwater? (Check all that apply)

- Use groundwater for growing/livestock
- Use groundwater for my home or business
- Use groundwater or works for an agency that uses groundwater for environmental purposes
- Live in a city or community that uses groundwater
- Own land with a groundwater well
- Work for a reclamation district or municipal or public water system
- Work for a land use planning agency
- Work for a state or federal agency
- Concerned member of the public
- Other (please describe):

2. Before this workshop, were you familiar with Sustainable Groundwater Management Act?

- Yes
- No

3. Do you know which Groundwater Sustainability Agency represents you or your community?

- Yes
- No

If yes, which Groundwater Sustainability Agency represents you?

4. Do you own or operate a well?

- Yes
- No

5. If you answered yes to #4, has your well ever gone dry?

- Yes
- No

If yes, what is the depth of your well?

Tracy Subbasin Sustainable Management Criteria Participant Guide

6. Have you heard of any else's well going dry during the last 10 years?

- Yes
- No

If yes, where was the well located (approximately)?

Tracy Subbasin Sustainable Management Criteria Participant Guide

PART 3

The Sustainable Groundwater Management Act identifies six “undesirable results” that may negatively impact a groundwater basin:

- Chronic lowering of groundwater levels
- Reduction of groundwater storage
- Degraded water quality
- Land subsidence (sinking)
- Surface water depletion

The sixth undesirable result is seawater intrusion, which does not occur in our region. To be considered an undesirable result these effects must be defined as “significant and unreasonable.” The Sustainable Groundwater Management Act allows local agencies to determine what is considered “significant and unreasonable” for each undesirable result. *This is where we need your help.*

During the workshop, we will be collectively discussing the questions below to get your input on how to define “significant and unreasonable” for the undesirable results listed above. Your input will help the Groundwater Sustainability Agencies develop the sustainable management criteria for the Tracy Subbasin.

1. How would you describe ‘sustainability’ in terms of the region’s groundwater resources?
What would make the region’s groundwater resources ‘unsustainable’?

Tracy Subbasin Sustainable Management Criteria

Participant Guide

2. The Groundwater Sustainability Agencies have identified the following draft criteria to define how low **groundwater levels** could drop before they become significant and unreasonable:
- Domestic and irrigation wells go dry
 - Increased costs to pump groundwater
 - Surface water is depleted such that creeks go dry
 - Groundwater supported vegetation die or cannot repopulate
 - Groundwater quality is degraded by increasing the salt content
 - Groundwater quality declines to the point of being unusable

Are the impacts listed above good indicators of the sustainability of the region's groundwater resources? Why or why not?

Are there other impacts related to the reliability of the region's groundwater resources that the Groundwater Sustainability Agencies should consider?

Tracy Subbasin Sustainable Management Criteria

Participant Guide

3. The Groundwater Sustainability Agencies have identified the following draft criteria to define what would make the **quality of groundwater** significant and unreasonable:
- Migration of large-scale groundwater contamination
 - Contaminant concentrations in public supply wells above legal limits
 - Degraded water quality that leads to reduced crop production
 - Increased groundwater salinity requiring treatment
 - Implementation of projects and management actions that increase concentrations of elements that make the groundwater unusable

Are the impacts listed above good indicators of the **quality** of the region's groundwater resources? Why or why not?

Are there other impacts related to the quality of the region's groundwater supplies that the Groundwater Sustainability Agencies should consider?

Tracy Subbasin Sustainable Management Criteria

Participant Guide

6. What other impacts caused by or related to groundwater use should the Groundwater Sustainability Agencies consider when defining sustainability for the basin's groundwater resources?

Tracy Subbasin Workshop #3 Summary

Date: Tuesday, August 10, 2021

Time: 5:30 p.m. – 6:30 p.m.

Location: Virtual (Zoom)

Attendees	
Name	Agency
David Weisenberger	Banta-Carbona Irrigation District*
Chelsea Spier	California Department of Water Resources
Jackson Cook	California Department of Water Resources
Greg Gibson	City of Lathrop*
Lea Emmons	City of Tracy*
Nacho Mendoza	Diablo Water District
Daniel Golman	Member of the public
George Hartmann	Member of the public
Jim Boyle	Member of the public
L. Sipich	Member of the public
Mary Mitracos	Member of the public
Ralph	Member of the public
Nader Shareghi	Mountain House Community Services District
Eric Thorburn	Oakdale Irrigation District
Claire Howard	San Luis & Delta-Mendota Water Authority
John Brodie	San Luis & Delta-Mendota Water Authority
Jose Coronado	San Joaquin County*
Scott Tyrell	San Joaquin County*
Staff and Presenters	
Name	Agency
Sergio Morales	Focus Interpreting (Spanish interpreter)
Elizabeth Simon	Stantec
Kirsten Pringle	Stantec
Richard Shatz	GEI
Matt Zidar	San Joaquin County*

*indicates that the agency is one of the Tracy Subbasin Groundwater Sustainability Agencies

Purpose

The Tracy Subbasin Groundwater Sustainability Agencies (GSAs) held a coordinated, virtual public workshop from 5:30 p.m. to 6:30 p.m. on Tuesday, January 10, 2021. This was the third and final in a series of public workshops aimed at educating and soliciting input from members of the public about key topics related to the development of the Groundwater Sustainability Plan (GSP) for the Subbasin. The workshop was held during the beginning of the 30-day public comment period for the draft GSP. The purpose of the workshop was to prepare beneficial users of groundwater and other stakeholders to provide comment on the plan. Discussion topics included the content of the draft GSP, public comment process, water budgets, projects and management actions, and groundwater monitoring network.

Summary

The workshop was held virtually through Zoom, a video conferencing and online meeting platform. A total of 23 individuals attended, including technical staff and GSA representatives. Live Spanish interpretation was provided.

The Tracy Subbasin GSAs advertised the workshop via postings on the Tracy Subbasin and GSAs' websites and social media accounts and emails to the Interested Parties Database. The workshop flyer is included as **Attachment A** to this summary. Email invitations were also sent directly to individuals representing beneficial users of groundwater, stakeholder organizations, and adjacent basins. This included targeted invitations to local Reclamation Districts, public water agencies, community services districts, individual well owners, and organizations representing environmental uses of groundwater in the basin.

The workshop started with opening remarks from Matt Zidar, San Joaquin County GSA representative. Richard Shatz, GEI (technical consultant) provided an informational presentation on the content of the draft GSP. This was followed by an overview of the draft GSP public comment process and next steps provided by Kirsten Pringle, Stantec (outreach consultant). Workshop participants then voted on which GSP topics they would like to discuss. Based on the results of the poll, Mr. Shatz provided additional information on the water budget, projects and management actions, and groundwater monitoring network.

Participants were encouraged to ask questions throughout the workshop. Staff also utilized live polling to gather information on the participants' existing level of knowledge about the GSP, interest in groundwater, and goals for attending the workshop. The workshop content was adapted based on the poll results.

Participant Questions

A workshop participant asked what the typical capacity of an aquifer storage and recovery (ASR) well is and how many ASR wells the City of Tracy has. Mr. Shatz responded that, in general, the amount of water that can be recharged into a basin is about half about what can be pumped out of it. He stated that the City of Tracy currently has one ASR well and plans to expand to eight ASR wells.

Tracy Subbasin - Workshop #3 Summary

A workshop participant asked why inflows into the Subbasin are projected to increase from historic and current conditions. Mr. Shatz responded that inflows into the Subbasin are projected to increase due to changes in land use patterns and climate change. Mr. Zidar added that the model used to develop the water budget has some discrepancies and that the water budget will be updated over the next five years as the model is refined.

A workshop participant asked which groundwater quality parameters the GSAs will be monitoring for. Mr. Shatz responded that the GSAs will be monitoring for total dissolved solids, nitrate, and boron. He stated that the GSAs set the thresholds for groundwater quality using drinking water quality standards (maximum contaminant levels). He noted that some wells are already exceeding these standards. In those cases, the threshold will be set to maintain the constituent at a similar concentration.



August 6, 2021

Via email and U.S. mail

*Alameda County
City of Lathrop
City of Tracy
San Joaquin County*

RE: Notice of Intent to Adopt a Groundwater Sustainability Plan

The Groundwater Sustainability Agencies (GSAs) of the Tracy Subbasin (referred to herein as the Tracy Subbasin GSAs), pursuant to California Water Code Section 10728.4, hereby give notice to the legislative body of any city, county, or Public Utilities Commission-regulated company within the geographic area covered by the pending Tracy Subbasin Groundwater Sustainability Plan (GSP) that they intend to adopt a GSP for the Tracy Subbasin (Basin No. 5-022.15). A map of the GSP area is included herein.

The undersigned GSAs specifically provide notice to the City of Lathrop, City of Tracy, Alameda County, and San Joaquin County of the GSAs' intent to adopt the Tracy Subbasin GSP no earlier than 90-days upon your receipt of this notice. Considerations to adopt this joint document shall occur as part of the public hearings to be held individually by the undersigned GSAs.

Cities or counties that receive this notice may request to consult on the Tracy Subbasin GSP. These requests must be received within 30 calendar days upon receipt of this notice. Written requests to consult with one or more of the GSAs intended to adopt the Tracy Subbasin GSP shall be delivered to the GSP coordinator identified below.

Matt Zidar, San Joaquin County
mzidar@sjgov.org or by phone at (209) 953 -7460.

Interested parties may provide comments on the Public Draft GSP during the scheduled public comment period, August 9 through September 9, 2021. Information regarding the Draft GSP has been posted on the Tracy Subbasin website at tracysubbasin.org. The Draft GSP can be viewed on the website homepage. To review the list of GSA public hearings schedule for adoption proceedings of the Tracy Subbasin, visit www.tracysubbasin.org/meetings.

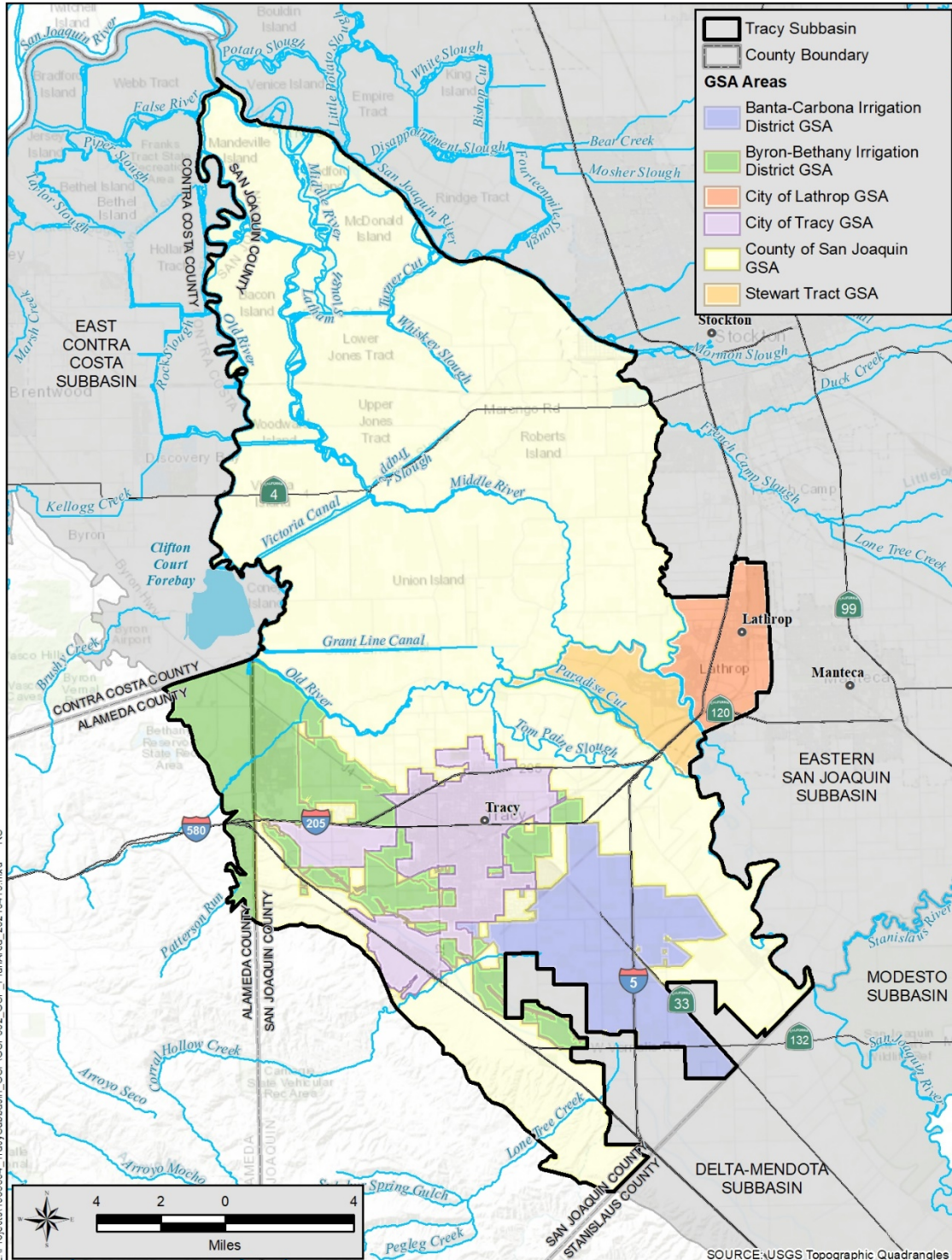
The GSAs look forward to adopting a GSP for the Tracy Subbasin. Should you have any questions about this notice, please contact your local GSA representative.

GSAs:

- Banta-Carbona Irrigation District GSA
- Byron-Bethany Irrigation District GSA
- City of Lathrop GSA
- City of Tracy GSA
- San Joaquin County GSA
- Stewart Tract GSA



Stewart Tract



13-Apr-2021 Z:\Projects\1905394_TracySubbasin_GSP\GSP002_GSP_PlanArea_20210413.mxd RS

Tracy Subbasin
San Joaquin and Alameda Counties

Tracy Subbasin



GSP Plan Area and GSAs

APRIL 2021

FIGURE 2-1

RESOLUTION 2021-16
RESOLUTION AUTHORIZING A NOTICE OF INTENT
TO ADOPT
THE TRACY SUBBASIN GROUNDWATER SUSTAINABILITY PLAN

WHEREAS, in August 2014, the California Legislature passed, and in September 2014 the Governor signed, legislation creating the Sustainable Groundwater Management Act ("SGMA") "to provide local groundwater sustainability agencies with the authority and technical and financial assistance necessary to sustainably manage groundwater" (Wat. Code, § 10720, (d));

WHEREAS, SGMA requires sustainable management through the development of groundwater sustainability plans ("GSPs"), which can be a single plan developed by one or more groundwater sustainability agency ("GSA") or multiple coordinate plans within a basin or subbasin (Wat. Code, § 10727);

WHEREAS, SGMA requires a GSA manage groundwater in all basins designated by the Department of Water Resources ("DWR") as a medium or high priority, including the Tracy Subbasin (designated basin number 5-22.15);

WHEREAS, in order to exercise the authority granted by SGMA, a local agency may decide to become a GSA;

WHEREAS, the Byron-Bethany Irrigation District (BBID or District) is a local agency as defined by SGMA;

WHEREAS, on March 21, 2017, the District Board of Directors adopted Resolution No. 2017-5, thereby deciding to become the GSA for the areas of the Tracy Subbasin (Subbasin No. 5-22.15) within the District boundaries in Contra Costa and San Joaquin Counties, and both within and outside the District boundaries in Alameda County;

WHEREAS, the District subsequently transmitted notice of its intent to become a GSA consistent with Resolution No. 2017-5 to DWR, and following the required notice, became the GSA for the areas of the Tracy Subbasin within the District boundaries in Contra Costa and San Joaquin Counties, and both within and outside the District boundaries in Alameda County;

WHEREAS, on February 11, 2019, DWR released the final basin boundary modification for the Tracy Subbasin, and thereby divided the Tracy Subbasin into the East Contra Costa and Tracy Subbasins;

WHEREAS, BBID has the authority to draft, adopt, and implement a GSP (Wat. Code, § 10725 *et seq.*); and

WHEREAS, on September 24, 2019, the GSAs executed a Memorandum of Agreement for the purpose of developing a GSP and coordinating sustainable groundwater management in the Tracy Subbasin (Wat. Code, § 10723.6(i)); and

WHEREAS, BBID is coordinating with the other GSAs in the Tracy Subbasin to draft a single GSP;

WHEREAS, SGMA requires a GSA to adopt a GSP at a public hearing at least 90 days after providing notice to a city or county within the area of the proposed plan (Wat. Code, § 10728.4).

NOW, THEREFORE, BE IT RESOLVED that the Board of Directors hereby approves and authorizes the filing of the Notice of Intent, attached as Exhibit "A", to adopt the Final Tracy Subbasin GSP.

PASSED AND ADOPTED at a Rescheduled Meeting of the Board of Directors of Byron-Bethany Irrigation District on 29 June 2021 by the following vote:

AYES: ALVAREZ, KAGEHIRO, M.MAGGIORE, T.MAGGIORE, PEREIRA, TUSO

NOES:

ABSENT: ENOS

ABSTAIN:

/s/ Russell Kagehiro

Mr. Russell Kagehiro, President

Secretary's Certification

I, Kelley Geyer, Deputy Secretary of the Board of Directors of Byron-Bethany Irrigation District, do hereby certify that the foregoing Resolution is a true and correct copy entered into the Minutes of the Rescheduled Meeting of 29 June, 2021, at which time a quorum was present, and no motion to amend or rescind the above resolution was made.

/s/ Kelley Geyer

Kelley Geyer, Deputy Secretary

RESOLUTION NO. 2021-02

**RESOLUTION OF THE BANTA CARBONA IRRIGATION DISTRICT
AUTHORIZING ISSUANCE OF
NOTICE OF INTENT TO ADOPT A GROUNDWATER SUSTAINABILITY PLAN**

A. WHEREAS, in August 2014, the California Legislature passed, and in September 2014 the Governor signed, legislation creating the Sustainable Groundwater Management Act (“SGMA”) “to provide local groundwater sustainability agencies with the authority and technical and financial assistance necessary to sustainably manage groundwater” (Wat. Code, § 10720, (d)); and

B. WHEREAS, SGMA requires sustainable management through the development of groundwater sustainability plans (“GSPs”), which can be a single plan developed by one or more groundwater sustainability agency (“GSA”) or multiple coordinate plans within a basin or subbasin (Wat. Code, § 10727); and

C. WHEREAS, SGMA requires a GSA to manage groundwater in all basins designated by the Department of Water Resources (“DWR”) as a medium or high priority, including the Tracy Subbasin; and

D. WHEREAS, the Banta-Carbena Irrigation District (“BCID”) formed a GSA for the purposes of sustainably managing groundwater in the Tracy Subbasin, within its jurisdictional boundaries, pursuant to the requirements of SGMA; and

E. WHEREAS, BCID has the authority to draft, adopt, and implement a GSP (Wat. Code, § 10725 *et seq.*); and

F. WHEREAS, BCID has joined with other GSAs to develop a single GSP and coordinating sustainable groundwater management in the Tracy Subbasin (Wat. Code, § 10723.6 (i)); and

G. WHEREAS, the GSAs preparing the GSP for the Tracy Subbasin are finalizing the GSP for the Tracy Subbasin; and

H. WHEREAS, the GSAs must release a Notice of Intent to Adopt the GSP pursuant to Water Code section 10728.4.

NOW, THEREFORE, BE IT RESOLVED that the Board of Directors of Banta-Carbena Irrigation District as follows:

1. BCID hereby approves and authorizes issuance of a Notice of Intent to Adopt a Groundwater Sustainability Plan for the Tracy Subbasin as required by Water Code Section 10728.4.
2. BCID authorizes its consultant, Stantec, to issue the Notice of Intent on its behalf.


PASSED, APPROVED, AND ADOPTED this 14th day of July, 2021 by the following vote:

AYES: Directors James M. Thoming, Glenn Robertson, Mark Cardoza and Annette Elissagaray

NAYS: None

ABSTAIN: None

ABSENT: Director Keith Robertson



President

Attest:



Margaret Howe, Secretary

Date: 8/5/2021

ITEM 5.1

CITY MANAGER'S REPORT JULY 12, 2021 CITY COUNCIL REGULAR MEETING

ITEM: **AUTHORIZE NOTICE OF INTENT TO ADOPT THE GROUNDWATER SUSTAINABILITY PLAN FOR THE TRACY SUBBASIN**

RECOMMENDATION: **Adopt a Resolution Authorizing a Notice of Intent to Adopt the Groundwater Sustainability Plan for the Tracy Subbasin**

SUMMARY:

On August 29, 2014, the California Legislature passed the comprehensive groundwater legislation Sustainable Groundwater Management Act (SGMA). SGMA provides a framework for sustainable groundwater management in California, and can be found in Senate Bills 1168 and 1319 and Assembly Bill 1739.

The City of Lathrop is one of six Groundwater Sustainability Agencies (GSAs) that form the Tracy Subbasin. Under SGMA, the GSAs must complete a Groundwater Sustainability Plan (GSP) and submit such plan to the Department of Water Resources (DWR) by January 31, 2022. Under a Memorandum of Agreement (MOA) executed on September 24, 2019, the City of Lathrop and the other five local agencies have been collaborating to develop a single GSP for the Tracy Subbasin.

The final GSP for the Tracy Subbasin will be presented to Council for adoption consideration in October or November of 2021. At least 90-days prior to the adoption hearing, the GSAs in the Tracy Subbasin are required by SGMA to send a Notice of Intent to adopt the GSP (Notice of Intent) to the cities and counties within the GSP area.

Staff recommends that Council, as the governing body of the City of Lathrop Groundwater Sustainability Agency (GSA), adopt the attached Resolution authorizing release of Notice of Intent to Adopt the Groundwater Sustainability Plan for the Tracy Subbasin.

BACKGROUND:

On August 29, 2014, the California Legislature passed comprehensive groundwater legislation contained in Senate Bills 1168 and 1319 and Assembly Bill 1739, which are collectively referred to as the Sustainable Groundwater Management Act (SGMA). SGMA provides a framework for sustainable groundwater management in California.

SGMA requires government and water agencies in groundwater basins designated as medium or high priority by the California Department of Water Resources (DWR) to meet certain requirements:

CITY MANAGER'S REPORT **PAGE 2**
JULY 12, 2021 CITY COUNCIL REGULAR MEETING
NOTICE OF INTENT TO ADOPT THE GROUNDWATER SUSTAINABILITY PLAN
FOR THE TRACY SUBBASIN

- Form new Groundwater Sustainability Agencies (GSA) by June 30, 2017.
- Complete and submit a Groundwater Sustainability Plan (GSP) to DWR by January 31, 2020 for critically over drafted basins and by January 31, 2022 for non-critically over drafted basins.
- Update the GSP every five years.
- Achieve basin sustainability within 20 years of submitting the GSP.

The City of Lathrop overlies the Tracy Subbasin, which is designated by the State as a medium-priority, non-critically over drafted basin. Pursuant to the requirements of SGMA, the City of Lathrop originally formed as a GSA on October 3, 2016, for the portion of the City located east of the San Joaquin River and within the Eastern San Joaquin Subbasin. In 2018, the DWR approved a Basin Boundary Modification such that the City of Lathrop was located entirely within the Tracy Subbasin. Five other GSAs located in the Tracy Subbasin include the Banta-Carbona Irrigation District GSA, Byron-Bethany Irrigation District GSA, City of Tracy GSA, San Joaquin County GSA, and Stewart Tract GSA (herein collectively referred to as the "Tracy Subbasin GSAs").

On September 24, 2019, the Tracy Subbasin GSAs executed a Memorandum of Agreement to coordinate groundwater management and develop a single GSP for the Tracy Subbasin, which is due to the State no later than January 31, 2022. Local agencies have collaboratively managed groundwater resources in the Tracy Subbasin for decades. As a result of these efforts, groundwater resources in the basin are already sustainable. The GSP will provide a roadmap to continue to the sustainability of the region's groundwater supplies.

The GSP is being collaboratively developed with input from the six GSAs, as well as input from members of the public provided through monthly meetings, public workshops, and public comment periods. The Draft GSP is anticipated to be released for public comment and review in August 2021.

SGMA requires GSAs to adopt the final GSP at a public hearing. At least 90-days prior to the hearing, the GSA must send a notice to cities and counties within the plan area notifying them of the proposed GSP. This requirement is identified in Section 10728.4 of the California Water Code, which states that:

A groundwater sustainability agency may adopt or amend a groundwater sustainability plan after a public hearing, held at least 90 days after providing notice to a city or county within the area of the proposed plan or amendment. The groundwater sustainability agency shall review and consider comments from any city or county that receives notice pursuant to this section and shall consult with a city or county that requests consultation within 30 days of receipt of the notice. Nothing in this section is intended to preclude an agency and a city or county from otherwise consulting or commenting regarding the adoption or amendment of a plan.

CITY MANAGER'S REPORT **PAGE 3**
JULY 12, 2021 CITY COUNCIL REGULAR MEETING
NOTICE OF INTENT TO ADOPT THE GROUNDWATER SUSTAINABILITY PLAN
FOR THE TRACY SUBBASIN

The final GSP for the Tracy Subbasin will be presented to Council for consideration to adopt at a regular public hearing held in October or November of 2021. At least 90-days prior to the adoption hearing, the GSAs in the basin will send a Notice of Intent to Adopt the GSP (Notice of Intent) to cities and counties within the GSP area. A copy of this Notice of Intent is provided as Attachment B.

REASON FOR RECOMMENDATION:

Pursuant to SGMA requirements, staff recommends Council to adopt a resolution authorizing a Notice of Intent to Adopt the Groundwater Sustainability Plan for the Tracy Subbasin.

FISCAL IMPACT:

There is no fiscal impact at this time for releasing the Notice of Intent to Adopt the Tracy Subbasin Groundwater Sustainability Plan.

ATTACHMENTS:

- A. Resolution Authorizing Notice of Intent to Adopt the Groundwater Sustainability Plan for the Tracy Subbasin
- B. Notice of Intent to Adopt the Tracy Subbasin Groundwater Sustainability Plan

CITY MANAGER'S REPORT
JULY 12, 2021, CITY COUNCIL REGULAR MEETING
NOTICE OF INTENT TO ADOPT THE GROUNDWATER SUSTAINABILITY PLAN
FOR THE TRACY SUBBASIN

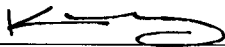
APPROVALS:



Greg Gibson
Senior Civil Engineer

6/28/2021

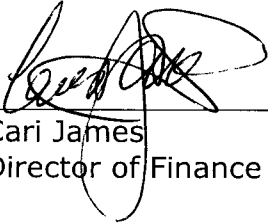
Date



Michael King
Director of Public Works

6/23/2021

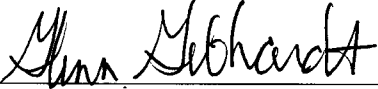
Date



Cari James
Director of Finance

6/23/2021

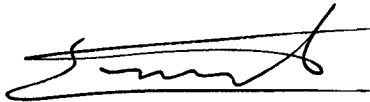
Date



Glenn Gebhardt
City Engineer

6/28/21

Date



Salvador Navarrete
City Attorney

6-24-2021

Date



Stephen J. Salvatore
City Manager

6-30-21

Date

RESOLUTION 21 - _____

A RESOLUTION OF THE CITY COUNCIL OF THE CITY OF LATHROP AUTHORIZING A NOTICE OF INTENT TO ADOPT THE GROUNDWATER SUSTAINABILITY PLAN FOR THE TRACY SUBBASIN

WHEREAS, in August 2014, the California Legislature passed, and in September 2014 the Governor signed, legislation creating the Sustainable Groundwater Management Act ("SGMA") "to provide local groundwater sustainability agencies with the authority and technical and financial assistance necessary to sustainably manage groundwater" (Wat. Code, § 10720, (d)); and

WHEREAS, SGMA requires sustainable management through the development of groundwater sustainability plans ("GSPs"), which can be a single plan developed by one or more groundwater sustainability agency ("GSA") or multiple coordinate plans within a basin or subbasin (Wat. Code, § 10727); and

WHEREAS, SGMA requires a GSA manage groundwater in all basins designated by the Department of Water Resources ("DWR") as a medium or high priority, including the Tracy Subbasin (designated basin number 5-22.15); and

WHEREAS, the City of Lathrop GSA was formed as a GSA on October 3, 2016, for the purposes of sustainably managing groundwater in the Eastern San Joaquin Subbasin, within its jurisdictional boundaries, pursuant to the requirements of SGMA; and

WHEREAS, in October 2018, the DWR approved a jurisdictional Basin Boundary Modification such that the City of Lathrop was located entirely within the Tracy Subbasin; and

WHEREAS, the City of Lathrop GSA has the authority to draft, adopt, and implement a GSP (Wat. Code, § 10725 et seq.); and

WHEREAS, on September 24, 2019, the GSAs executed a Memorandum of Agreement for the purpose of developing a GSP and coordinating sustainable groundwater management in the Tracy Subbasin (Wat. Code, § 10723.6(i)); and

WHEREAS, the GSAs submitted an Initial Notification to DWR to jointly develop a GSP for the Tracy Subbasin on February 12, 2018; and

WHEREAS, the City of Lathrop GSA is coordinating with the other GSAs in the Tracy Subbasin to draft a single GSP; and

WHEREAS, SGMA requires a GSA to adopt a GSP at a public hearing at least 90 days after providing notice to a city or county within the area of the proposed plan (Wat. Code, § 10728.4).

NOW, THEREFORE, BE IT RESOLVED, that the City Council of the City of Lathrop, as the governing body of the City of Lathrop Groundwater Sustainability Agency, hereby approves the Notice of Intent (Attachment B to the City Managers Report) to adopt the final Tracy Subbasin Groundwater Sustainability Plan.

The foregoing resolution was passed and adopted this 12th day of July, 2021, by the following vote of the City Council, to wit:

AYES:

NOES:

ABSTAIN:


ABSENT:

Sonny Dhaliwal, Mayor

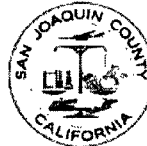
ATTEST:

Teresa Vargas, City Clerk

APPROVED AS TO FORM:



Salvador Navarrete, City Attorney



Stewart
Tract



Attachment B

[Date]

Via email and U.S. mail

*Alameda County
City of Lathrop
City of Tracy
San Joaquin County*

RE: Notice of Intent to Adopt a Groundwater Sustainability Plan

The Groundwater Sustainability Agencies (GSAs) of the Tracy Subbasin (referred to herein as the Tracy Subbasin GSAs), pursuant to California Water Code Section 10728.4, hereby give notice to the legislative body of any city, county, or Public Utilities Commission-regulated company within the geographic area covered by the pending Tracy Subbasin Groundwater Sustainability Plan (GSP) that they intend to adopt a GSP for the Tracy Subbasin (Basin No. 5-022.15). A map of the GSP area is included herein.

The undersigned GSAs specifically provide notice to the City of Lathrop, City of Tracy, Alameda County, and San Joaquin County of the GSAs' intent to adopt the Tracy Subbasin GSP no earlier than 90-days upon your receipt of this notice. Considerations to adopt this joint document shall occur as part of the public hearings to be held individually by the undersigned GSAs.

Cities or counties that receive this notice may request to consult on the Tracy Subbasin GSP. These requests must be received within 30 calendar days upon receipt of this notice. Written requests to consult with one or more of the GSAs intended to adopt the Tracy Subbasin GSP shall be delivered to the GSP coordinator identified below.

Matt Zidar, San Joaquin County
mzidar@sjgov.org or by phone at (209) 953 -7460.

Interested parties may provide comments on the Public Draft GSP during the scheduled public comment period, August 9 through September 9, 2021. Information regarding the Draft GSP has been posted on the Tracy Subbasin website at tracysubbasin.org. The Draft GSP can be viewed on the website homepage. To review the list of GSA public hearings schedule for adoption proceedings of the Tracy Subbasin, visit www.tracysubbasin.org/meetings.

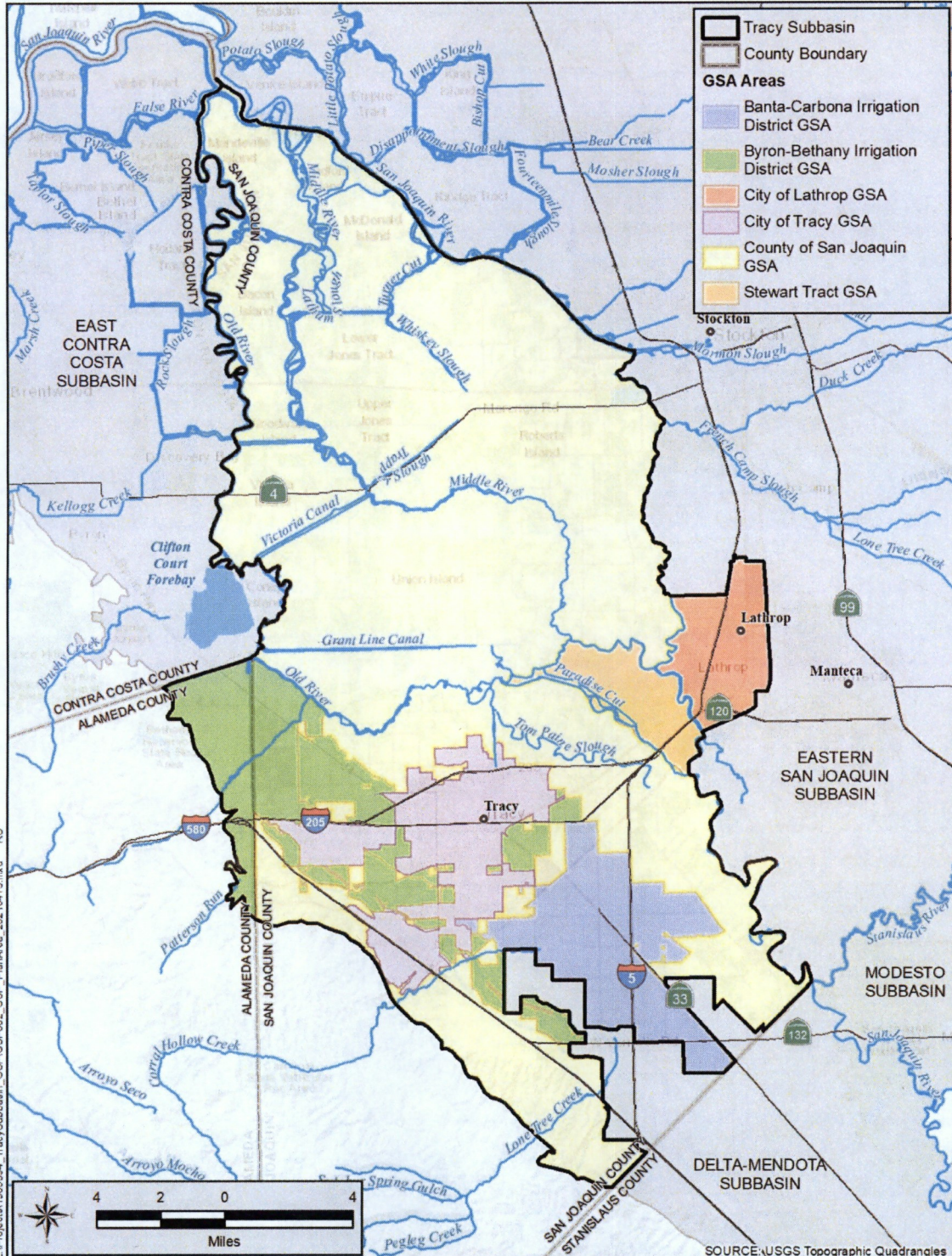
The GSAs look forward to adopting a GSP for the Tracy Subbasin. Should you have any questions about this notice, please contact your local GSA representative.

GSAs:

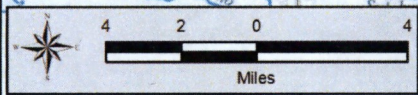
- Banta-Carbona Irrigation District GSA
- Byron-Bethany Irrigation District GSA
- City of Lathrop GSA
- City of Tracy GSA
- San Joaquin County GSA
- Stewart Tract GSA



Stewart
Tract



13-Apr-2021 Z:\Projects\1905394_TracySubbasin_GSP\GSP002_GSP_PlanArea_20210413.mxd RS



Tracy Subbasin
San Joaquin and Alameda Counties

Tracy Subbasin



GSP Plan Area and GSAs

APRIL 2021

FIGURE 2-1

SOURCE:USGS Topographic Quadrangles

**PAGE LEFT
INTENTIONALLY
BLANK**

1.



SAN JOAQUIN COUNTY
**FLOOD CONTROL & WATER
CONSERVATION DISTRICT**
P. O. BOX 1810
1810 EAST HAZELTON AVENUE
STOCKTON, CALIFORNIA 95201
TELEPHONE (209) 468-3000
FAX NO. (209) 468-2999

KRIS BALAJI
DIRECTOR OF PUBLIC WORKS
FLOOD CONTROL ENGINEER

July 22, 2021

Via email and U.S. mail
Alameda County
City of Lathrop
City of Tracy
San Joaquin County

RE: Notice of Intent to Adopt a Groundwater Sustainability Plan

The San Joaquin County (SJC) Groundwater Sustainability Agency (GSA) of the Tracy Subbasin (referred to herein as the Tracy Subbasin GSA), pursuant to California Water Code Section 10728.4, hereby gives notice to the legislative body of any city, county, or Public Utilities Commission-regulated company within the geographic area covered by the pending Tracy Subbasin Groundwater Sustainability Plan (GSP) that it intends to adopt a GSP for the Tracy Subbasin (Basin No. 5-022.15). A map of the GSP area is included herein.

Notice is hereby provided to the City of Lathrop, the City of Tracy, and Alameda County of its intention to adopt the Tracy Subbasin GSP no earlier than 90-days upon your receipt of this notice. Considerations to adopt this joint document shall occur as part of the public hearings to be held individually by the undersigned GSAs.

Cities or counties that receive this notice may request to consult on the Tracy Subbasin GSP. These requests must be received within 30 calendar days upon receipt of this notice. Written requests to consult with one or more of the GSAs intended to adopt the Tracy Subbasin GSP shall be delivered to the GSP coordinator identified below:

Matt Zidar, San Joaquin County
mzidar@sjgov.org or by phone at (209) 953 -7460

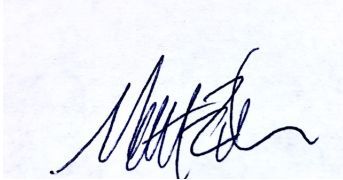
Interested parties may provide comments on the Public Draft GSP during the scheduled public comment period, August 9 through September 9, 2021. Information regarding the Draft GSP has been posted on the Tracy Subbasin website at tracysubbasin.org. The Draft GSP can be viewed on the website homepage. To review the list of GSA public hearings schedule for adoption proceedings of the Tracy Subbasin, visit:

www.tracysubbasin.org/meetings

The GSAs of the Tracy Subbasin look forward to adopting a GSP for the Tracy Subbasin. Should you have any questions about this notice, please contact your local GSA representative. The Tracy Subbasin GSAs are as follows:

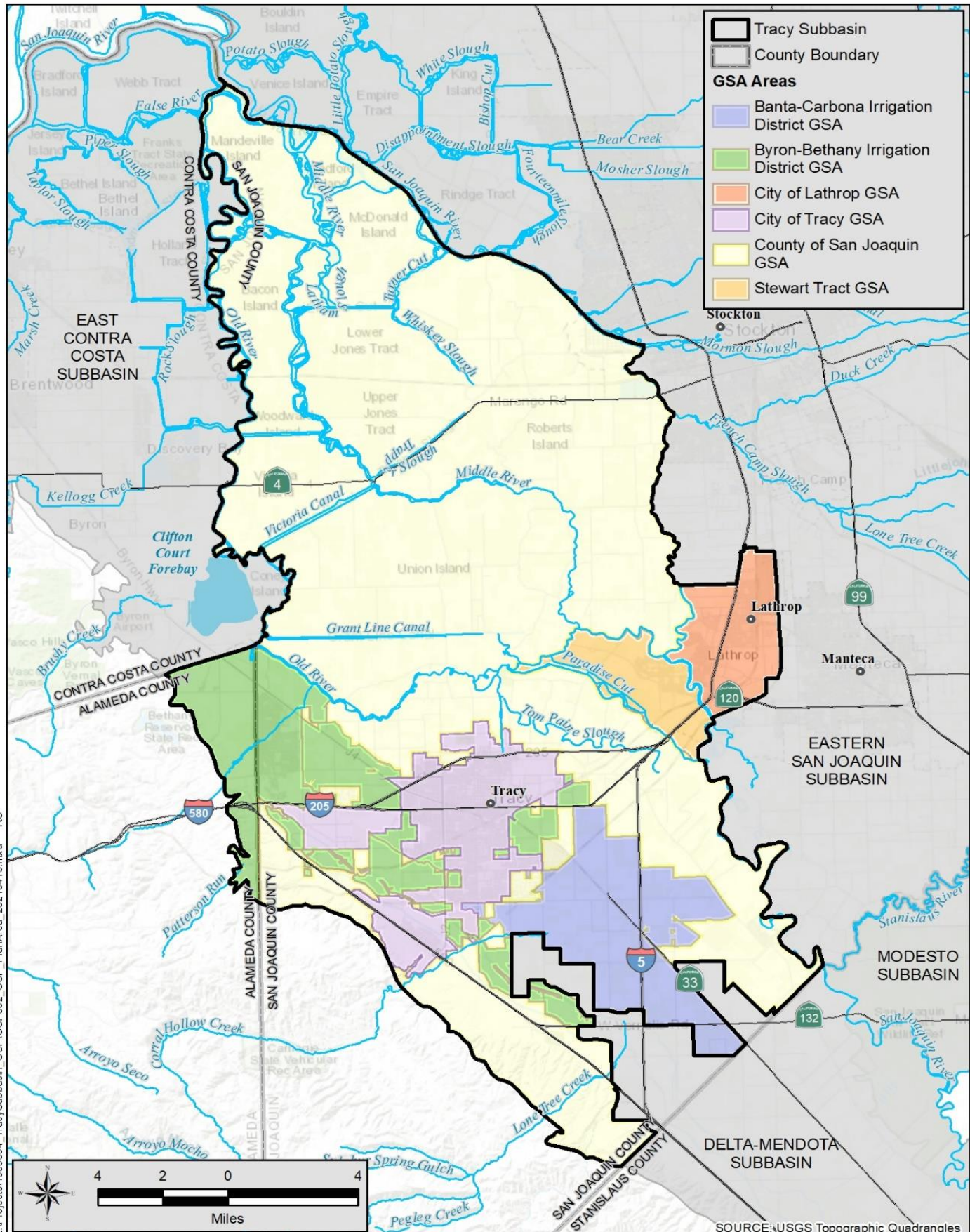
GSA:

- Banta-Carbona Irrigation District GSA
- Byron-Bethany Irrigation District GSA
- City of Lathrop GSA
- City of Tracy GSA
- San Joaquin County GSA
- Stewart Tract GSA

A handwritten signature in black ink, appearing to read "Matt Zidar", is centered within a light blue rectangular box.

By: _____

Matt Zidar
GSP Coordinator, San Joaquin County GSA



Z:\Projects\1905394_TracySubbasin_GSP\GSP002_GSP_PlanArea_20210413.mxd RS



Tracy Subbasin
San Joaquin and Alameda Counties

Tracy Subbasin



GSP Plan Area and GSAs

APRIL 2021

FIGURE 2-1

SOURCE: USGS Topographic Quadrangles

STEWART TRACT GROUNDWATER SUSTAINABILITY AGENCY

RESOLUTION NO. 21-1

**A RESOLUTION OF THE BOARD OF DIRECTORS OF THE STEWART TRACT
GROUNDWATER SUSTAINABILITY AGENCY AUTHORIZING
A NOTICE OF INTENT TO ADOPT THE TRACY SUBBASIN
GROUNDWATER SUSTAINABILITY PLAN**

WHEREAS, in August 2014, the California Legislature passed, and in September 2014 the Governor signed, legislation creating the Sustainable Groundwater Management Act (“SGMA”) “to provide local groundwater sustainability agencies with the authority and technical and financial assistance necessary to sustainably manage groundwater” (Wat. Code, § 10720, (d)); and

WHEREAS, SGMA requires sustainable management through the development of groundwater sustainability plans (“GSPs”), which can be a single plan developed by one or more groundwater sustainability agency (“GSA”) or multiple coordinate plans within a basin or subbasin (Wat. Code, § 10727); and

WHEREAS, SGMA requires a GSA manage groundwater in all basins designated by the Department of Water Resources (“DWR”) as a medium or high priority, including the Tracy Subbasin (designated basin number 5-22.15); and

WHEREAS, Stewart Tract GSA was formed as a GSA on June 13, 2017 for the purposes of sustainably managing groundwater in the Tracy Subbasin, within its jurisdictional boundaries, pursuant to the requirements of SGMA; and

WHEREAS, Stewart Tract GSA has the authority to draft, adopt, and implement a GSP (Wat. Code, § 10725 et seq.); and

WHEREAS, on September 24, 2019, the GSAs executed a Memorandum of Agreement for the purpose of developing a GSP and coordinating sustainable groundwater management in the Tracy Subbasin (Wat. Code, § 10723.6(i)); and

WHEREAS, the GSAs submitted an Initial Notification to DWR to jointly develop a GSP for the Tracy Subbasin on February 12, 2018; and

WHEREAS, the Stewart Tract GSA is coordinating with the other GSAs in the Tracy Subbasin to draft a single GSP; and

WHEREAS, SGMA requires a GSA to adopt a GSP at a public hearing at least 90 days after providing notice to a city or county within the area of the proposed plan (Wat. Code, § 10728.4).

NOW, THEREFORE, BE IT RESOLVED that the Board of Directors of the Stewart

Tract GSA finds as follows:

Section 1. Incorporation of Recitals. The Recitals are hereby incorporated in full as set forth above.

Section 2. Approval of Notice of Intent. Stewart Tract GSA hereby approves the notice of intent, attached in Exhibit A, to adopt the final Tracy Subbasin GSP .


Section 3. Official Actions. The President is authorized to transmit a conformed copy of this Resolution to the other member GSA's of the Tracy Sub-Basin as evidence of the Stewart Tract GSA's formal action.

Section 4. Effective Date. This Resolution shall take effect immediately upon its adoption by the Board of Directors.

* * * * *

PASSED, APPROVED AND ADOPTED this 4th day of August 2021.

By: 
President,
Stewart Tract Groundwater Sustainability Agency

ATTEST:
By: 
Director,
Stewart Tract Groundwater Sustainability Agency

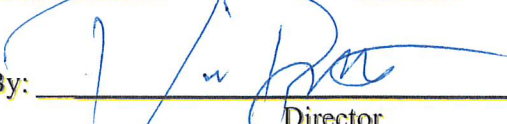
I, Ramon Batista, Director of the Stewart Tract Groundwater Sustainability Agency, do hereby certify that the following resolution was duly passed and adopted by the Board of Directors of Stewart Tract Groundwater Sustainability Agency, at a special meeting thereof held on the 4th day of August 2021.

AYES: Director:

NOES: Director:

ABSENT: Director:

ABSTAINED: Director:

By: 
Director,
Stewart Tract Groundwater Sustainability Agency



**Stewart
Tract**



[Date]

Via email and U.S. mail

*Alameda County
City of Lathrop
City of Tracy
San Joaquin County*

RE: Notice of Intent to Adopt a Groundwater Sustainability Plan

The Groundwater Sustainability Agencies (GSAs) of the Tracy Subbasin (referred to herein as the Tracy Subbasin GSAs), pursuant to California Water Code Section 10728.4, hereby give notice to the legislative body of any city, county, or Public Utilities Commission-regulated company within the geographic area covered by the pending Tracy Subbasin Groundwater Sustainability Plan (GSP) that they intend to adopt a GSP for the Tracy Subbasin (Basin No. 5-022.15). A map of the GSP area is included herein.

The undersigned GSAs specifically provide notice to the City of Lathrop, City of Tracy, Alameda County, and San Joaquin County of the GSAs' intent to adopt the Tracy Subbasin GSP no earlier than 90-days upon your receipt of this notice. Considerations to adopt this joint document shall occur as part of the public hearings to be held individually by the undersigned GSAs.

Cities or counties that receive this notice may request to consult on the Tracy Subbasin GSP. These requests must be received within 30 calendar days upon receipt of this notice. Written requests to consult with one or more of the GSAs intended to adopt the Tracy Subbasin GSP shall be delivered to the GSP coordinator identified below.

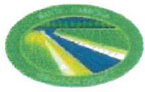
Matt Zidar, San Joaquin County
mzidar@sjgov.org or by phone at (209) 953 -7460.

Interested parties may provide comments on the Public Draft GSP during the scheduled public comment period, August 9 through September 9, 2021. Information regarding the Draft GSP has been posted on the Tracy Subbasin website at tracysubbasin.org. The Draft GSP can be viewed on the website homepage. To review the list of GSA public hearings schedule for adoption proceedings of the Tracy Subbasin, visit www.tracysubbasin.org/meetings.

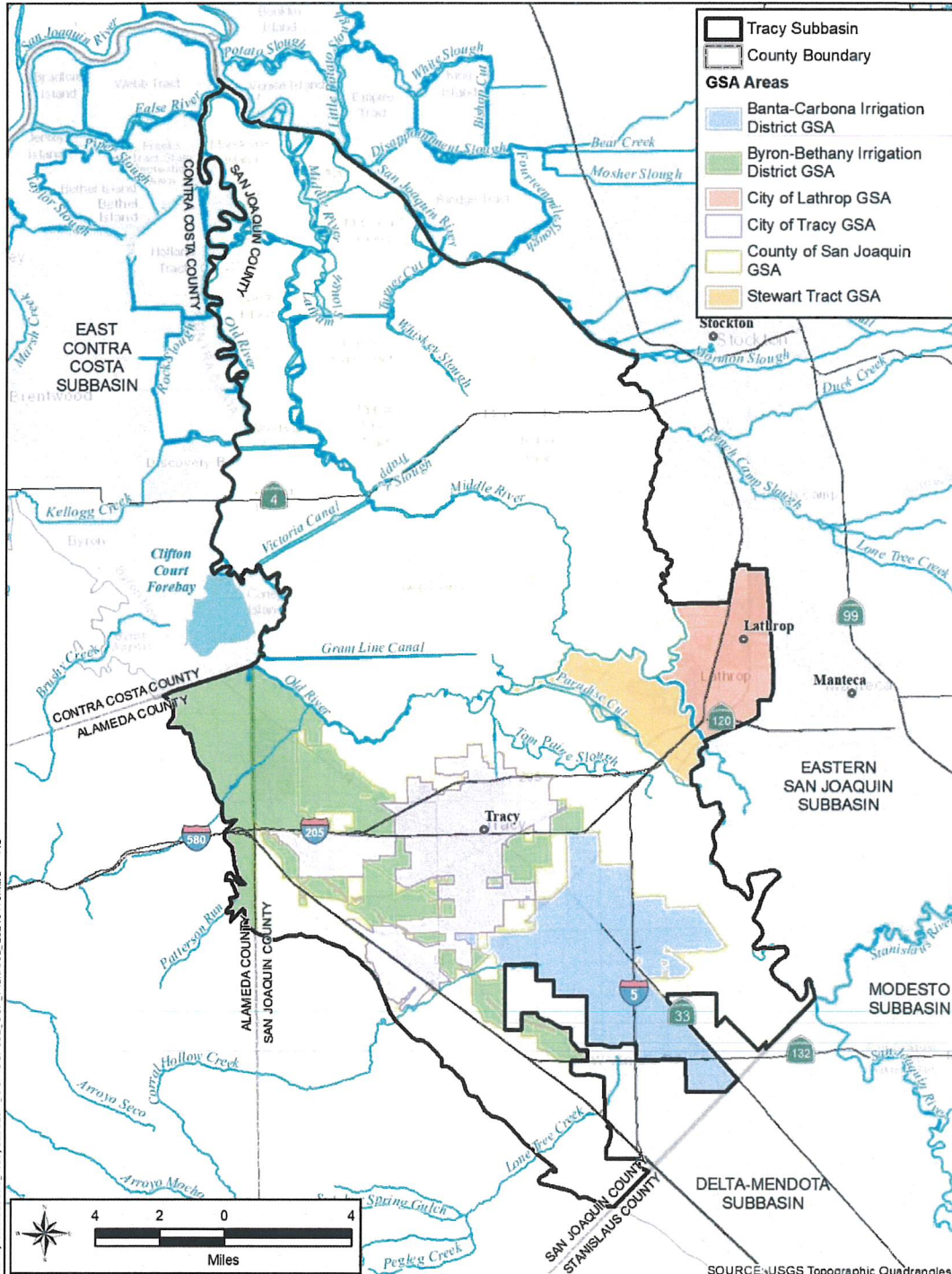
The GSAs look forward to adopting a GSP for the Tracy Subbasin. Should you have any questions about this notice, please contact your local GSA representative.

GSAs:

- Banta-Carbona Irrigation District GSA
- Byron-Bethany Irrigation District GSA
- City of Lathrop GSA
- City of Tracy GSA
- San Joaquin County GSA
- Stewart Tract GSA



Stewart Tract



13-Apr-2021 Z:\Projects\1505394_TracySubbasin_GSP\GSP02_GSP_PlanArea_20210413.mxd RS

Tracy Subbasin
San Joaquin and Alameda Counties
Tracy Subbasin



GSP Plan Area and GSAs
APRIL 2021
FIGURE 2-1

RESOLUTION 2021-092

APPROVING NOTICE OF INTENT TO ADOPT THE TRACY SUBBASIN GROUNDWATER SUSTAINABILITY PLAN

WHEREAS, in August 2014, the California Legislature passed, and in September 2014 the Governor signed, legislation creating the Sustainable Groundwater Management Act ("SGMA") "to provide local groundwater sustainability agencies with the authority and technical and financial assistance necessary to sustainably manage groundwater" (Wat. Code, § 10720, (d)); and

WHEREAS, SGMA requires sustainable management through the development of groundwater sustainability plans ("GSPs"), which can be a single plan developed by one or more groundwater sustainability agency ("GSA") or multiple coordinate plans within a basin or subbasin (Wat. Code, § 10727); and

WHEREAS, SGMA requires a GSA manage groundwater in all basins designated by the Department of Water Resources ("DWR") as a medium or high priority, including the Tracy Subbasin (designated basin number 5-22.15); and

WHEREAS, City of Tracy was formed as a GSA on February 2, 2016, by City Council per Resolution 2016-026, for the purposes of sustainably managing groundwater in the Tracy Subbasin, within its jurisdictional boundaries, pursuant to the requirements of SGMA; and

WHEREAS, City of Tracy has the authority to draft, adopt, and implement a GSP (Wat. Code, § 10725 *et seq.*); and

WHEREAS, on September 24, 2019, the GSAs executed a Memorandum of Agreement for the purpose of developing a GSP and coordinating sustainable groundwater management in the Tracy Subbasin (Wat. Code, § 10723.6(i)); and

WHEREAS, the GSAs submitted an Initial Notification to DWR to jointly develop a GSP for the Tracy Subbasin on February 12, 2018; and

WHEREAS, the City of Tracy is coordinating with the other GSAs in the Tracy Subbasin to draft a single GSP; and

WHEREAS, SGMA requires a GSA to adopt a GSP at a public hearing at least 90 days after providing notice to a city or county within the area of the proposed plan (Wat. Code, § 10728.4);

NOW, THEREFORE, BE IT RESOLVED, that the City Council of the City of Tracy hereby approves the Notice of Intent to adopt the final Tracy Subbasin GSP at least 90 days from the issuance of this notice.

The foregoing Resolution 2021-092 was adopted by the Tracy City Council on the 20th day of July, 2021, by the following vote:

AYES: COUNCIL MEMBERS: ARRIOLA, BEDOLLA, DAVIS, YOUNG

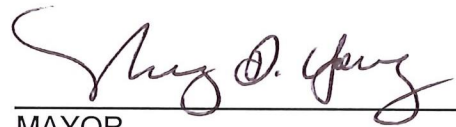
NOES: COUNCIL MEMBERS: NONE

ABSENT: COUNCIL MEMBERS: VARGAS

ABSTAIN: COUNCIL MEMBERS: NONE

ATTEST

CITY CLERK

A handwritten signature in black ink, appearing to read "May D. Young", written over a horizontal line.

MAYOR